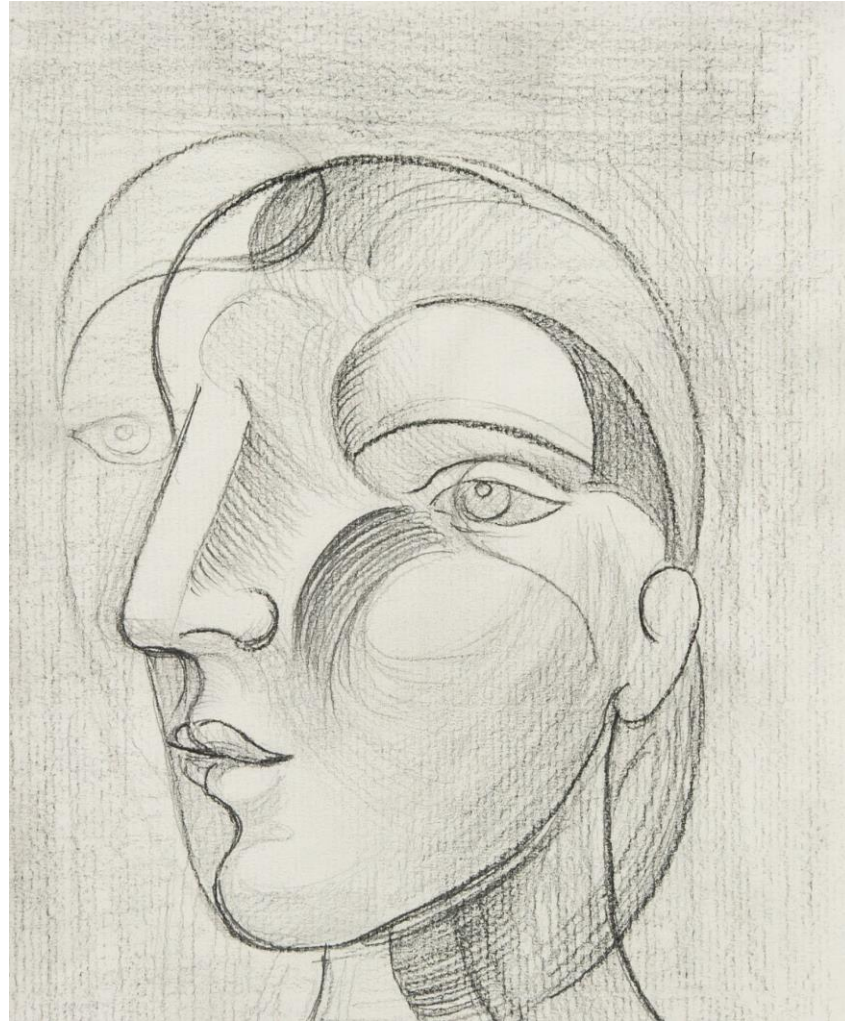
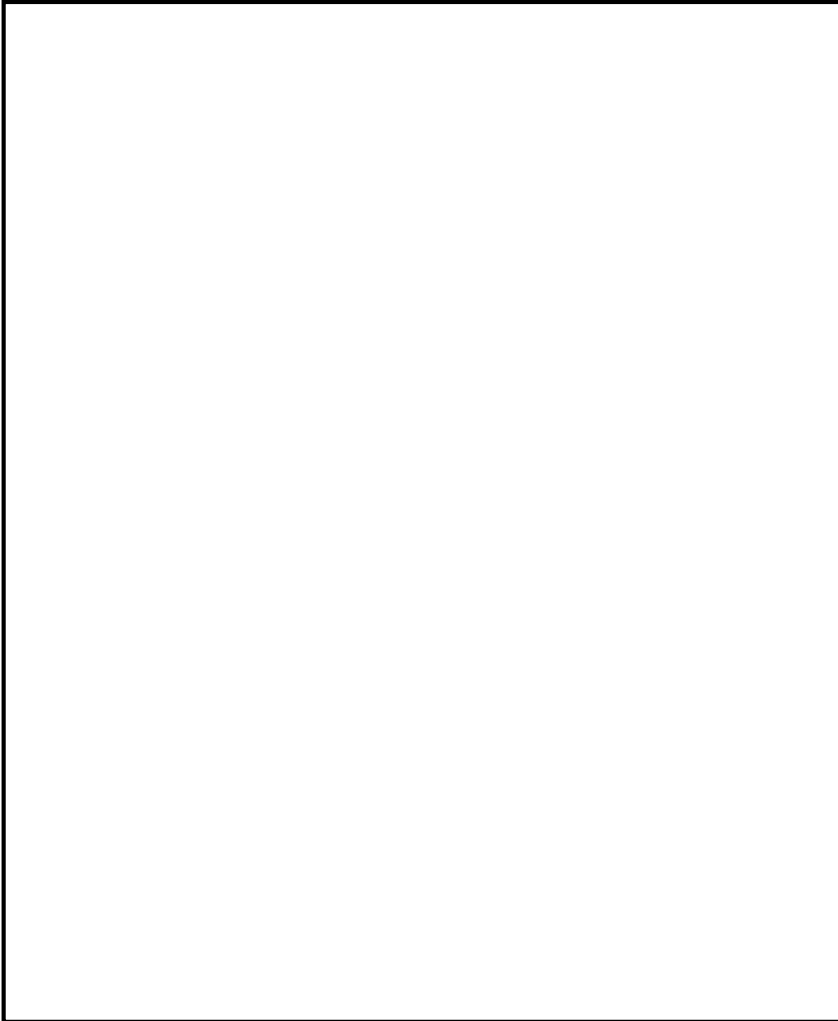


Cubist Portrait

- Using Pencil; draw the cubist inspired portrait.
- Drawing lightly, start with the basic shapes.
- Begin to add base tones, before moving on to adding darker tones.
- Lines closer together will create darker tones, whilst lines further apart create the illusion of light.
- Make sure the line goes with the curvature of the face.



Analysis

What shapes do you see in the image?

What is the subject of the image?

What visual elements have been used?